
CONNECTING TO AN EXCEL 2007 WORKBOOK OR AN ACCESS 2007 DATABASE WITH PBCONNECT

By Luc Magnée
2007-02-23

To connect to a Microsoft Office Access or Excel 2003 or earlier data source, you used the Microsoft Jet 4.0 OLE DB Provider.

To connect to a Microsoft Office Access 2007 or Excel 2007 data source, you need to download and install the file "2007 Office System Driver: Data Connectivity Components" **on both pbconnect server and client machines, unless you already have Office 2007 installed on the client machines** – you can download from

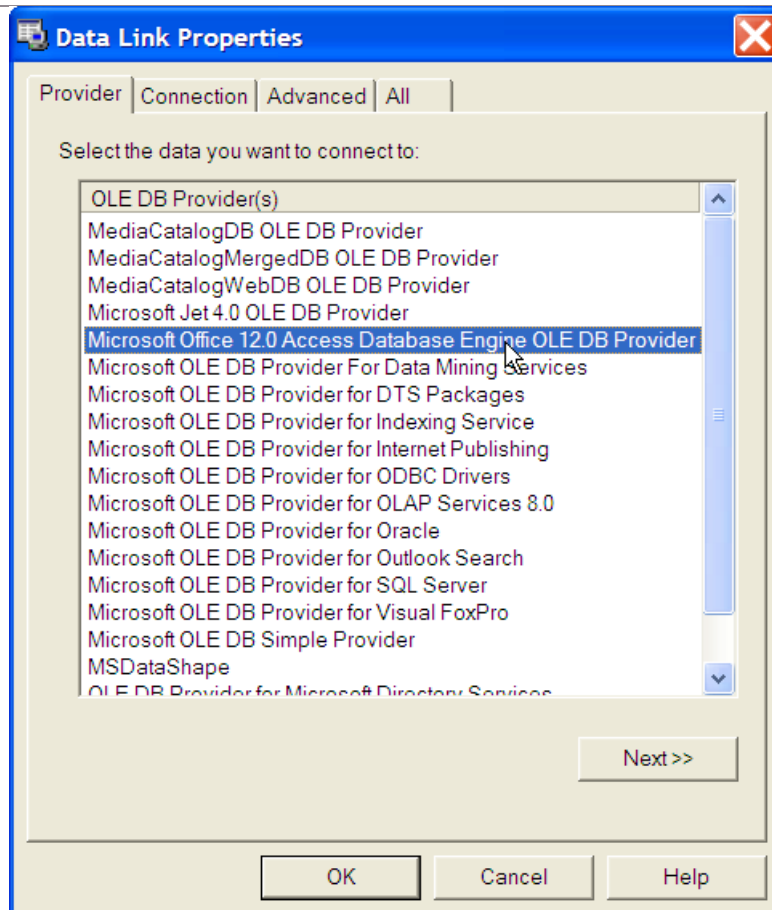
<http://www.microsoft.com/downloads/details.aspx?FamilyID=7554F536-8C28-4598-9B72-EF94E038C891&displaylang=en>

In order for users of Office 2003 or earlier versions to open an Excel 2007 workbook, they also need to download and install the file "Microsoft Office Compatibility Pack for Word, Excel, and PowerPoint 2007 File Formats" – you can download from

<http://www.microsoft.com/downloads/details.aspx?familyid=941B3470-3AE9-4AEE-8F43-C6BB74CD1466&displaylang=en>

1. Creating a Data Source for an Excel 2007 workbook

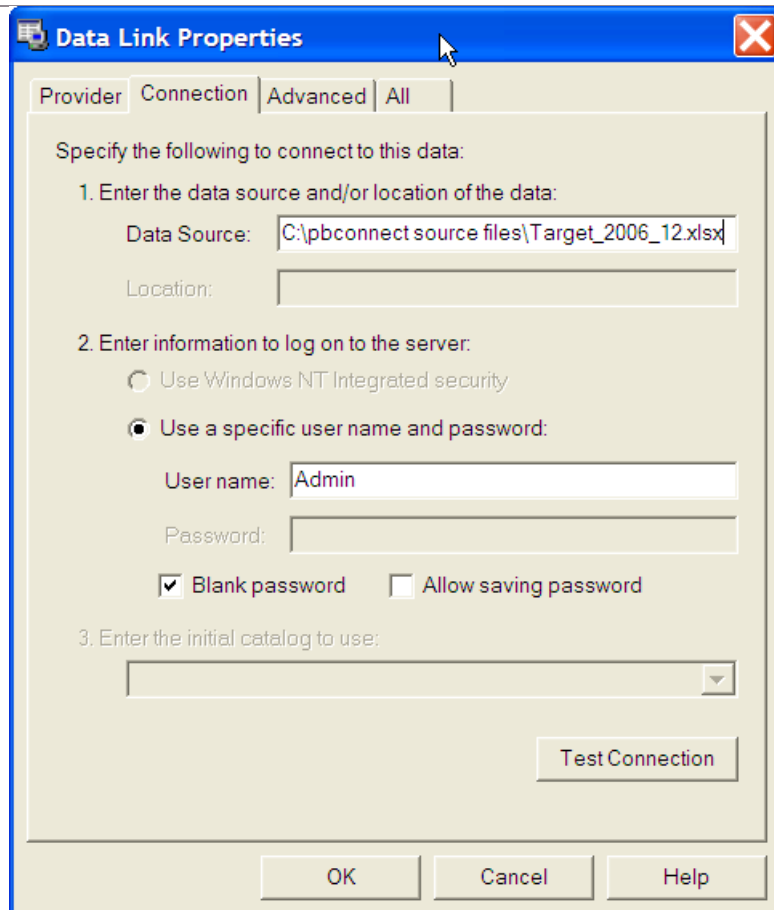
1. After installation of the file "2007 Office System Driver: Data Connectivity Components", restart the pbconnect Server to initialize the new driver.
2. Open a new Data Source, select Type: OLEDB and click on the "magic" button.
3. In the **Data Link Properties** window, select the Tab **Provider** then select the **Microsoft Office 12.0 Access Database Engine OLE DB Provider** and click on **Next>>**.



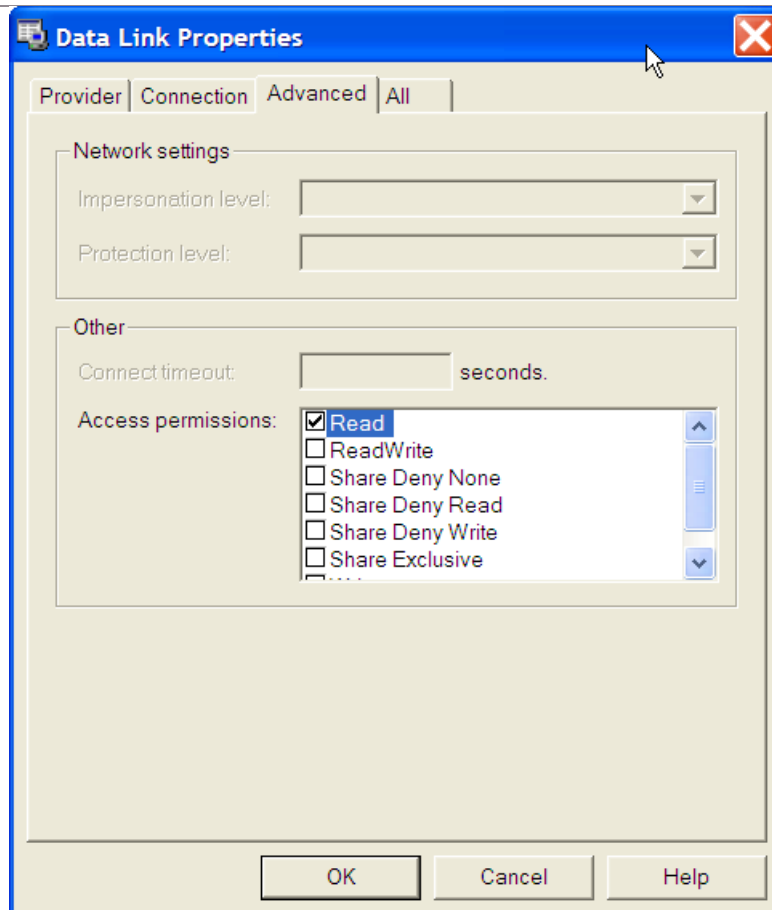
4. Under the **Connection** Tab, in the field **Enter the data source and/or location of the data** type either:

- the UNC path to your Excel 2007 workbook if it is located on a shared directory on your network using the format
\\<ComputerName> \<SharedDirecoryName> \<WorkbookName>.xlsx
- the full location of your Excel 2007 workbook if it is located on the computer running using the format **<Drive>:\<Directory>\>\<WorkbookName>.xlsx**

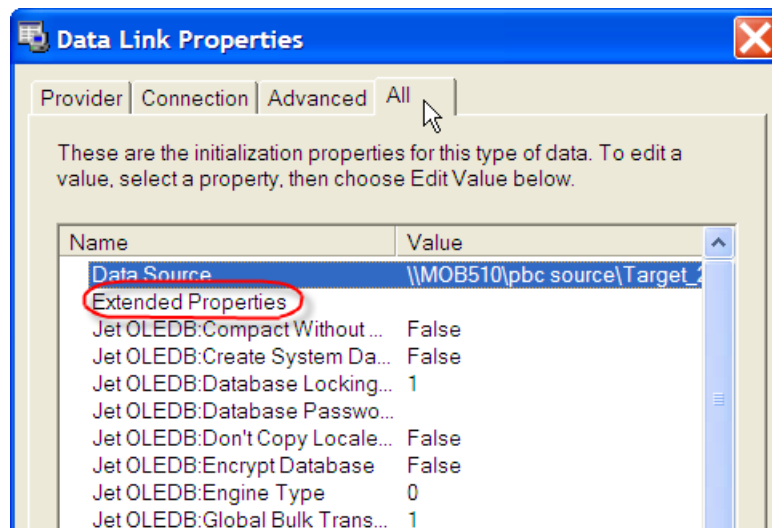
Select the Tab **Advanced**.



5. Under the **Advanced** tab, under **Other** > **Access permissions** select **Read** then click on the tab **All**.



6. Under the tab **All**, double-click **Extended Properties**

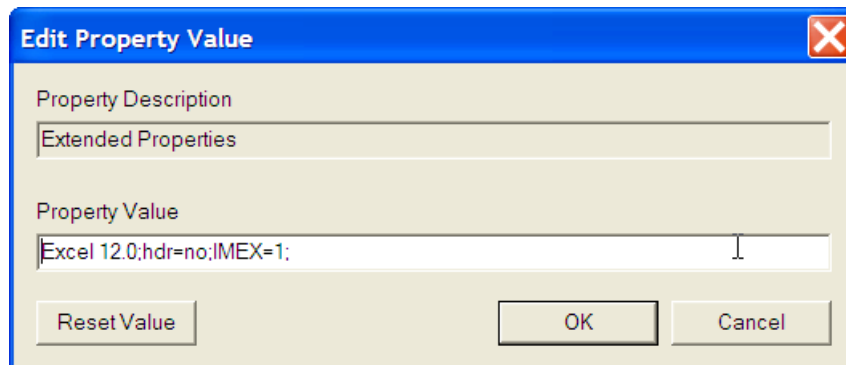


Then, in the Window Edit Property Value type the following:

- **Excel 12.0**; followed without white space by
- **Hdr=no**; if the first row of your Excel sheet is NOT used as Column header. If the first row of your Excel sheet is used as Column header, which is expected by default, you may type **Hdr=yes**; or nothing.
- **IMEX=1**; if you have mixed data types (e.g. a mix of numbers and text) in your columns and want to force the data retrieval independently of the data type. If you omit

this parameter, the provider only returns data of the majority type appearing in the columns and returns (null) for the minority data type.

The example given in the figure below is for an Excel 2007 workbook where the first row is NOT used as Column header and where you expect mixed data types and want to force retrieval of all data, independently of their type.



Click on **OK** to close the **Edit Property Value** window and in the **Data Link Properties** window select again the **Connection** tab to test your connection. If you get a **Test connection succeeded** message, click on **OK** to close the **Data Link Properties** window.

2. Creating a Data Source for an Access 2007 database

Proceed as stated under points 3 and 4 above. There is no need to make changes under the **Advanced** or **All** tabs.