

Connecting to a Visual FoxPro database in pbconnect

Bea Haazen – Sept. 2006

Microsoft Visual FoxPro is an OLE DB compliant object-oriented relational database management system. Retrieving data from a Visual FoxPro database in pbconnect is quite straight-forward.

Prerequisite:

To retrieve data from a Visual FoxPro database you will setup an OLE DB type data source connection in pbconnect, using the **Microsoft OLE DB provider for Visual FoxPro**. If the pbconnect server, and client for that matter, is installed on a machine other than the one that hosts the Visual Fox Pro database, you may need to install the appropriate driver on BOTH pbconnect server and all pbconnect client machines that will be used to connect to the Visual FoxPro database.

Obviously, you will also need to make sure that both pbconnect server and client machines have the necessary **rights to access the FoxPro database** and the server on which the database resides – contact your IT management on this issue when in doubt.

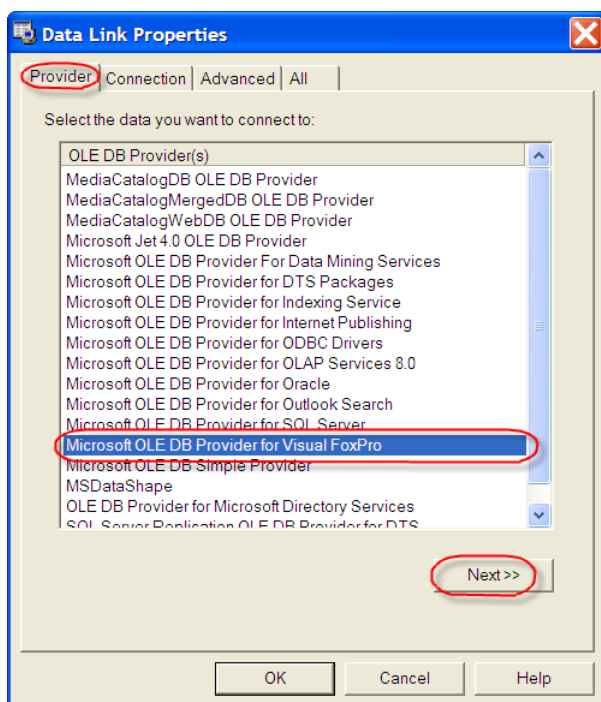
If the Microsoft OLE DB provider for Visual FoxPro is not available in the list of providers in the Data Link Properties window, make sure you install the driver prior to attempting to connect to the FoxPro database.

The driver – vfpoledb.exe – can be downloaded and installed from:

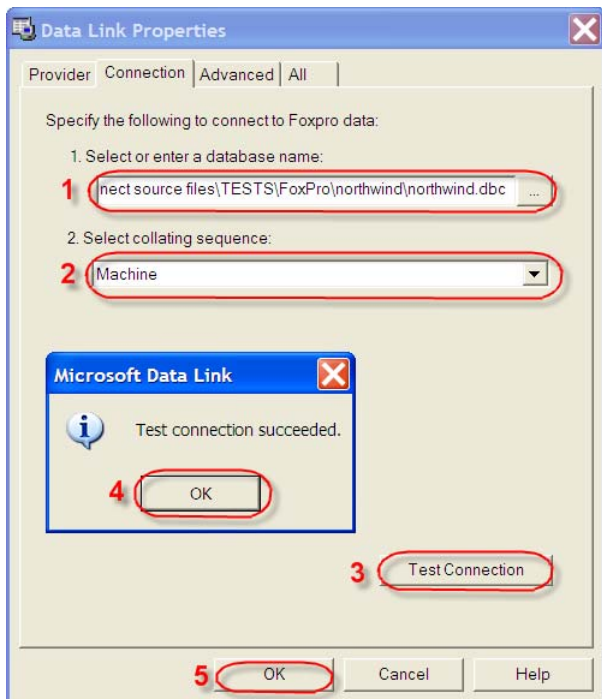
<http://www.microsoft.com/downloads/details.aspx?FamilyId=E1A87D8F-2D58-491F-A0FA-95A3289C5FD4&displaylang=en>

After installing the driver, the provider should be available from the Data Link Properties window, which opens during setup of an OLE DB type data source in pbconnect.

Step 1: setup the data source in pbconnect

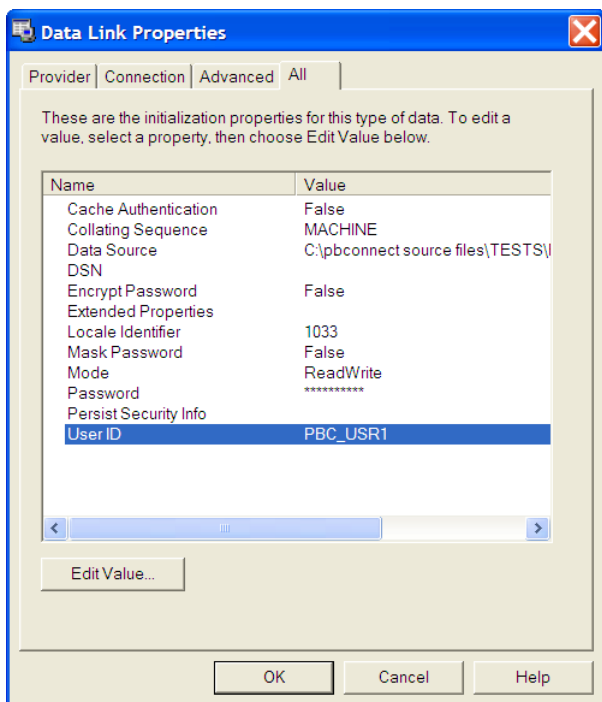


- Selecting an **OLE DB** type data source connection in pbconnect, the Data Link Properties window will open after clicking the 'magic button'.
- In the **Provider** tab, select the Microsoft OLE DB Provider for Visual FoxPro.
- Click **Next >>** to move on to the Connection tab.



In the **Connection** tab, consequently:

1. Browse to the location of the Visual FoxPro database through the '...' button. The exact location should be provided by your database administrator. Make sure you enter the **UNC path** to the database and that both pbconnect server and client have full access rights to this shared location.
2. The Select collating sequence by default is on '**Machine**'. Again, see you database administrator for any other settings.
3. **Test** your Connection.
4. A Test connection succeeded window will appear when your setup is correct. Click **OK** to close the window.
5. Click **OK** to leave the **Data Link Properties** window.

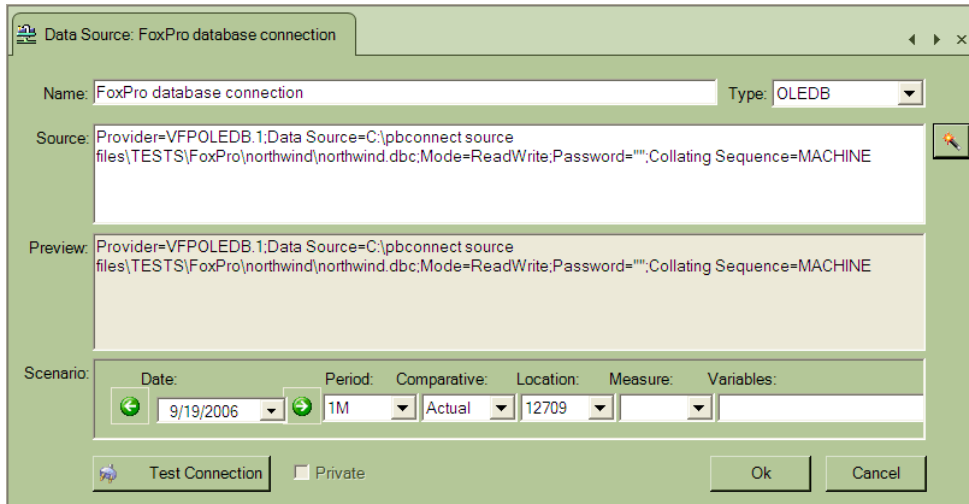


Should you be required to enter credentials to access the Visual FoxPro database, you can enter them under the **All** tab.

Select **Password** from the list and click **Edit Value...** to enter your password.

Select **User ID** from the list and click **Edit Value...** to enter your user ID.

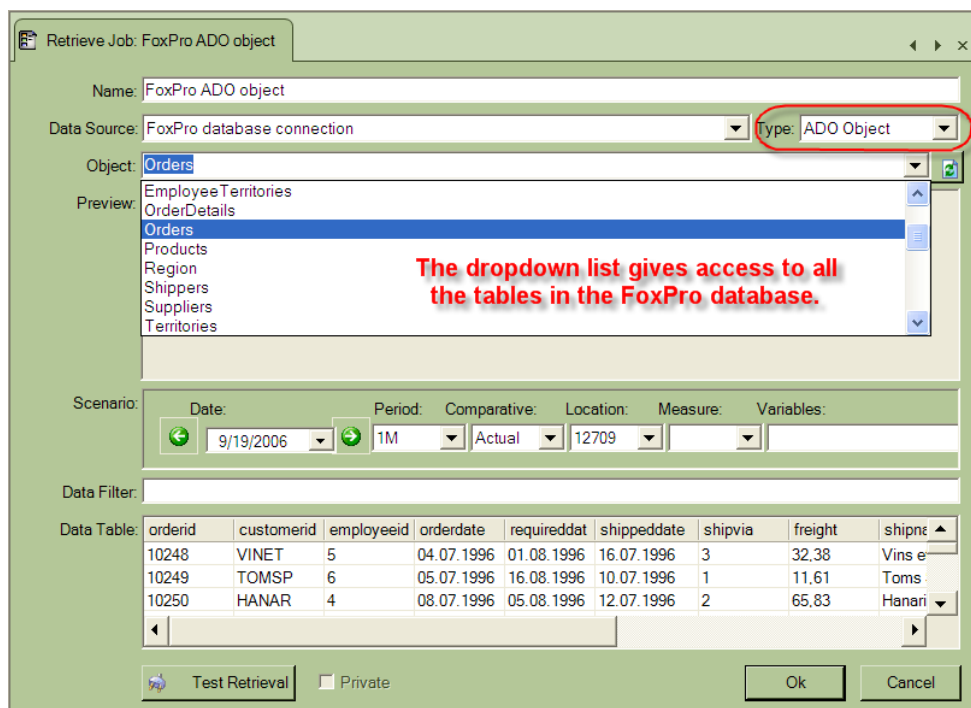
After exiting the Data Link Properties window, you will see the complete data source connection string in the pbconnect data source window.



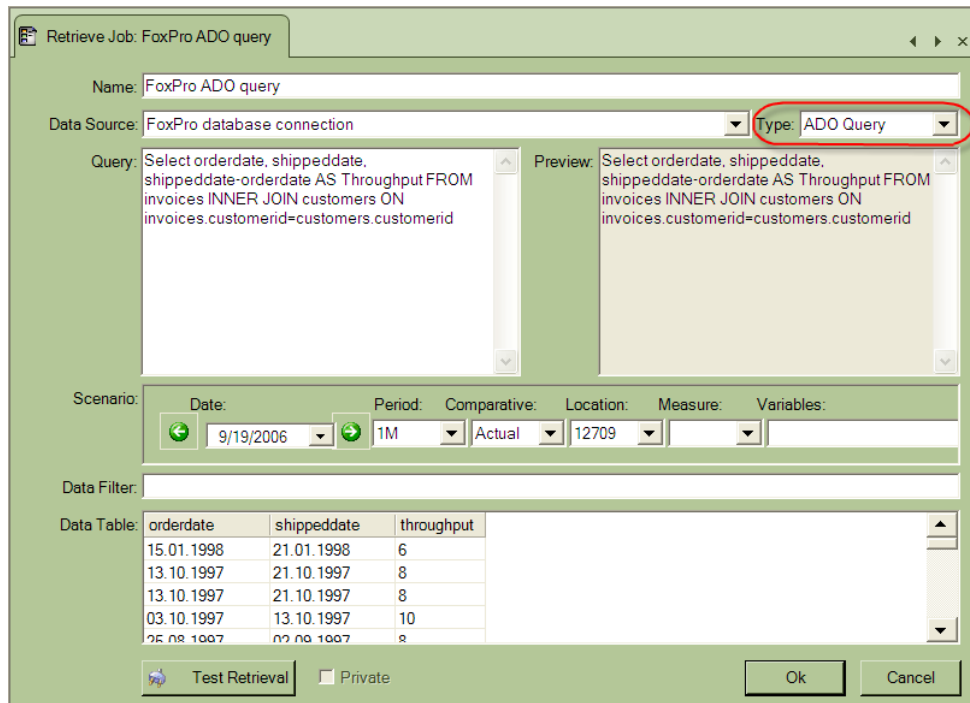
Step 2: setup the Retrieve Job

When you have installed a data source connection that links to a Visual FoxPro database, you can link the Retrieve Job by using either the ADO Object type or the ADO Query type.

Using the **ADO Object** type you will be able to select a table from the FoxPro database from the Object drop down list and continue the setup to retrieve data from that table. See the pbconnect user guide – 'Retrieving from an OLE DB Database source'.



Using the **ADO Query** type you will be able to select data from one or more tables in the FoxPro database using SQL statements.



IMPORTANT NOTE:

As it is the case with most databases from different vendors, Visual FoxPro uses its own SQL language which differs in many aspects from the SQL language for Microsoft Jet 4.0 OLE DB provider.

You may need to consult your database administrator to compose the correct SQL statement needed to retrieve the desired data.

If necessary you can find more information on:

<http://msdn2.microsoft.com/en-us/library/dd5f4hyy.aspx>