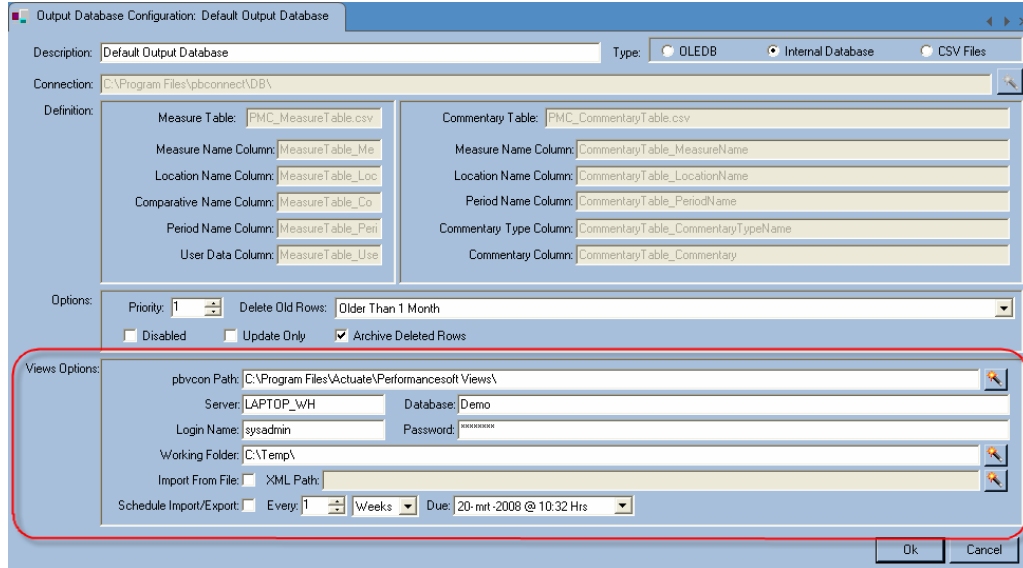
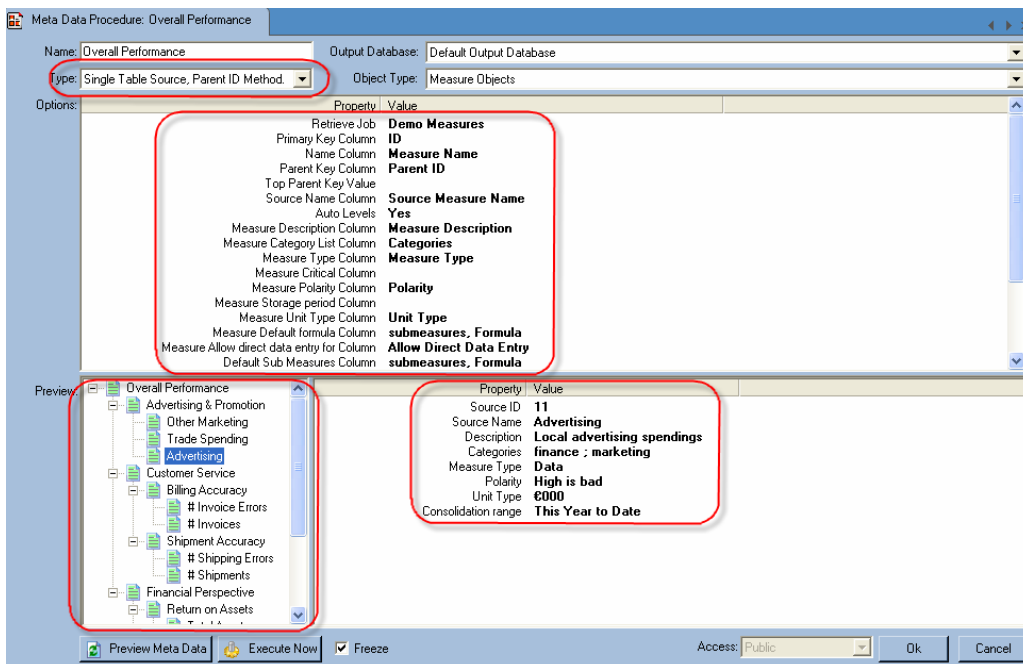




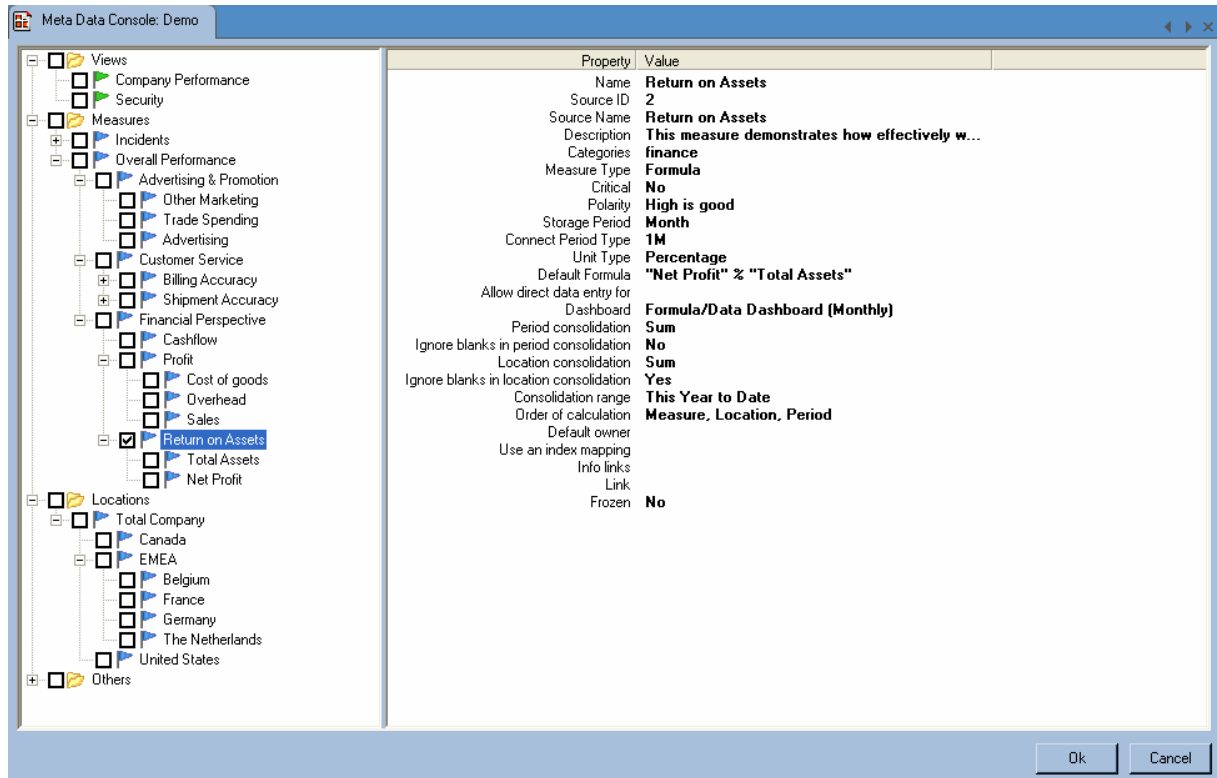
the system now allows to schedule metadata synchronization separately, independent from the automatic data processing scheduler.



The creation of a simple metadata source and related metadata retrieve job extracts the available metadata information from any source platform, as long as it is in an OLEDB, ODBC, OLAP, HTTP, XML or FILE compliant format. Any metadata source needs to be structured with either a parent ID or a flat structure method, in order for the system to interpret the hierarchical relations between the objects. The setup of a simple metadata procedure, as shown below, then allows for choosing the appropriate method, map columns to object properties and preview the resulting object tree and object properties.



Contrary to version 4.3, the 'tweaking' of object properties is no longer done in the metadata procedure. The metadata console, shown below, provides an overview of all objects resulting from all metadata procedures connected to the selected database, manually created objects and objects imported from the connected Views database.



Changes to objects and their properties can now be done by selecting one or multiple objects in the console preview tree, tweaking the desired changes and executing the synchronization process, either scheduled or by invoking it manually. The system will then synchronize information from metadata sources, manual object creations or changes in the console and any changes or additions that might have been done in the Views database.

Due to its new functionality, Connect 4.4 also offers batch processing of changes in multiple objects. Changing for instance the consolidation range or polarity for a large number of measures is now a task that can be done on the fly!

This new version also reads supporting objects from the Views database, such as available dashboards, period ranges, index mappings, and so on, in order to have those items available for setting the properties of views, measures and locations by simply selecting them in drop down lists.

Having all measures and locations and their properties available in the console, Connect 4.4 now allows for the creation and updating of multiple views and their properties in a matter of seconds, automatically synchronizing any new or changed objects in the connected Views database(s).

Next to the synchronization of views, measures and locations with the connected Views database, the system also takes care of creating any comparatives, locations and measure jobs, including their comparative/location elements in the data collection section of the system. This means that after executing the metadata setup, simply connecting any new measure jobs and their elements to the appropriate data procedures, retrieve jobs and data sources will allow you to load any historical, current and future data in a matter of minutes.

The basic import of Measure jobs, Locations and Comparatives from manually created Views XML files is still available through the Measure Jobs list, Location list and Comparative list windows in the Data Retrieval and Configuration bands of the application. Due to the overlap of this functionality with the full metadata capability, the basic import of Views objects in Connect is now *available in the standard version* of Actuate PerformanceSuite Connect.

Help files and product manual have been updated with the new functionalities.

---